



ALCEMA

INSPIRE ▶ COLLABORATE ▶ INNOVATE

The image features a dark blue background with several thick, black diagonal lines. On the left side, there is a large orange triangle pointing towards the center. The text 'ALCEMA' is centered in a large, white, bold, sans-serif font. Below it, the tagline 'INSPIRE ▶ COLLABORATE ▶ INNOVATE' is written in a smaller, orange, sans-serif font, with small orange triangles separating the words.

INSPIRE ▶ COLLABORATE ▶ INNOVATE



Alcema delivers a client's vision working in a collaborative way. We work together with our clients to create and innovate. Managing contracts for the most complex and challenging builds, and delivering these to extraordinary standards, every single time. Proud of my team, proud of our work, excited for the future. We are Alcema.



JASON SPENCER
Managing Director

ALCEMA

INSPIRE ▶ COLLABORATE ▶ INNOVATE

- ABOUT ALCEMA 04
- WE ARE ALCEMA 06
- OUR SERVICES 08
- CASE STUDIES 10
- OUR EXPERIENCE 20
- HEALTH AND SAFETY 24
- CLIENT TESTIMONIALS 26





ABOUT ALCEMA

Alcema is an accomplished construction company that undertakes both fit out and refurbishment projects as well as construction assignments that require extensive engineering and management.

The team have a wealth of experience and knowledge across all sectors of the construction industry. This diverse skill set allows us to undertake a wide variety of construction projects. The team is well equipped to perform more complex feats of engineering such as installing a tower crane through a building or raising temporary insulated 15m-tall walls to separate customers from construction activities, in a live environment – completed to an exceptional standard.

“Our portfolio spans numerous construction sectors, we are a contractor of choice for knowledgeable clients”

We consider every project to be unique and work closely with our clients to tailor our services to their individual needs. At Alcema we are strong advocates of team work and provide a non-adversarial approach to project delivery. This helps us create the perfect working conditions to excel in what we do, delivering with agility and a solution based approach throughout.



WE ARE ALCEMA

The versatility of our skill, scope of our knowledge, and depth of our experience are the building blocks of our success.



**JASON
SPENCER**

MANAGING DIRECTOR

BSc (Hons) Quantity Surveying, MRICS, NEBOSH General & Construction, CSCS Professional, IOSH, SMSTS

Jason has over 27 years of experience working in the construction industry during which he has held senior positions in both regional and national contractors. Jason has used these opportunities to develop his knowledge and expertise across different project scopes and in a variety of sectors, including education, health, retail, residential, commercial and hospitality, many of which involve live environments.

After successfully fulfilling senior management roles for other companies, Jason decided to establish Alcema Ltd in 2016. Jason is responsible for the senior management within the company whilst also continuing to take the lead on major projects.

- Recreational gym-goer
- Proud family man
- Keen cyclist – downhill only!



**PAUL
REEVE**

REGIONAL MANAGER

BSc (Hons) Quantity Surveying, HNC Building Studies, SMSTS, CSCS Black

Paul joined Alcema with over 25 years of experience in the construction industry. He has a strong background in quantity surveying and project management and has led projects up to £20 million in value. His clear communication skills and aptitude for developing positive and productive working relationships make Paul a highly valued asset to the team.

Paul is our Regional Manager and ensures all KPI's are met. Liaising with clients on various projects and taking the role of Contracts Manager on specific projects.

- Average golfer
- Great bathroom singer
- Even better daddy



**STEPHEN
EDMONDS**

TECHNICAL PROJECT MANAGER / BID MANAGER

Construction Management Degree, NVQ 7, CSCS Black, SMSTS

One of Alcema's founding members, Stephen was introduced to the construction industry through the family business before working with several main contractors to diversify his skillset. Stephen now has vast experience and expertise in multiple fields, which include estimating, quantity surveying, project management, design management, and value engineering. As such, Stephen oversees projects from first design to final handover.

Stephen's unique ability to think creatively in order to overcome technical or logistical challenges has proven instrumental to Alcema's success in delivering bespoke projects.

- Keen rower
- Rugby enthusiast
- Dog dad of two Jack Russells



**CHYRRYL
CULLEY**

COMPLIANCE MANAGER / OFFICE MANAGER

Prince2 Practitioner, IOSH Managing Safely, Asbestos Awareness, Environmental Awareness for Managers, Covid-19 Setting up & Operating a Safe Construction Site (CITB), CSCS

Chyrryl oversees all of Alcema's processes and procedures in relation to quality, health and safety, and the environment. She undertakes document control and manages RFIs and the drawing register. She also visits construction sites on a regular basis to verify works are compliant with all relevant regulations.

Since joining Alcema in 2019 Chyrryl has been involved in all of Alcema's projects. She has further experience in compliance administration working with Buckinghamshire Council, where she was responsible for various major construction projects.

- Avid rugby fan
- Lover of travel
- Experienced fitness instructor



**ADAM
NOLAN**

QUANTITY SURVEYOR

ONC, HNC, CSCS

Adam has been a Quantity Surveyor for over 15 years and is responsible for managing the costs of Alcema's projects. He compiles monthly valuations for each project and prices any variations in a timely manner. Adam also undertakes every project's procurement, including subcontractors, materials, and certifying payments.

In addition to his responsibilities as Quantity Surveyor Adam also undertakes the role of Project Manager for specific clients and leads the team involved.

- Competent golfer
- Passionate sports spectator
- Proud dad of two



**MARCUS
DARCY**

SENIOR SITE MANAGER / PROJECT LEAD

CIOB L4 Site Management, SMSTS, CSCS Gold

Marcus has been involved in the construction industry for over 18 years, working his way through the trades to Senior Site Manager and Project Lead for Alcema. The projects Marcus has led vary from £200,000 to £10.8 million in value. Regardless of budget, Marcus ensures every project receives the best possible value for money.

In his role as Senior Site Manager and Project Lead, Marcus oversees day-to-day activities on the construction site. This includes confirming that all packages are delivered to specification, undertaking weekly site inspections, maintaining health and safety standards, and ensuring subcontractors adhere to site rules.

- Enthusiastic cyclist
- Zealous runner
- Explorer of unmapped Britain

OUR SERVICES

Alcema delivers a comprehensive range of services across a variety of sectors. With each sector requiring a unique and tailored approach, we have developed a thorough understanding of the different environments we work in. This enables us to carry out our work effectively whilst causing minimal disruption to the day-to-day activities of those who work and live around us.



RETAIL & LEISURE

Ranging from refurbishments and simple fit out through to full redevelopments, our team have the experience and skill-set to execute these operations to the highest standard. We bring new concept designs to life and ensure brand identities are preserved or enhanced for established businesses. We manage our work activities with minimal disruptions to staff and customers. Alongside our meticulous planning to deliver agreed time frames, we ensure that all safety measures are put into place in live environments, with full consideration of the public domain that we so often come across.



HEALTHCARE

When asked to carry out improvements on any healthcare sector building, minimising the impact of construction becomes even more crucial. We believe it is our responsibility to accommodate the needs of the local community and work very closely with our clients to ensure patient safety and uninterrupted service throughout construction works. The team have completed various healthcare projects ranging from refurbishments, extensions and new build doctor's surgeries, through to new build oncology, nuclear medicine and cardiology wings with high tech MRI and linear accelerator equipment. Working on projects such as Wall House Surgery and Northampton General Hospital.



COMMERCIAL

Our services for commercial projects are always in high demand; we have a wealth of experience in this area, particularly in CAT A and B fit outs. We work closely with design consultants to build spectacular and high-quality facilities. Examples of our most recent work include a new Starbucks drive-through at Beaconsfield Services and a Cat B office fit out for the Civil Aviation Authority, as well as projects for Nando's and Pizza Express.



EDUCATION

The Alcema team have an abundance of experience working on projects in the education sector. We are highly skilled at working in live school environments and are acutely aware of the importance of effective health and safety practices during construction works. In close communication with our clients, we cater our work activities to the needs of the school, its staff, and its students. Previous projects in the education sector include the construction of pre-schools and SEND schools, and the refurbishment and fit-outs of various university buildings.



RESIDENTIAL

For residential developments, the team at Alcema can help add character and individual touches to help distinguish your brand and ensure a reputation of quality long after completion date. Working in compliance with added restrictions due to Covid-19 over 2020/2021, we have continued to complete extensive residential projects within the agreed time frame and budget.



FIRE SAFETY

The Ministry of Housing, Communities, and Local Government (MHCLG)'s Building Safety Programme was established to ensure high rise buildings are safe – and feel safe – now, and in the future. Alcema has become highly skilled in addressing the deficiencies of existing buildings and their lack of fire compartmentation. The Alcema team manages specialist remedial fire safety projects which include design, supply and install of Load Bearing SFS systems, SFS infill systems, insulated render, rain screen cladding, cladding including stone/brickslip, light steel framework, external facades, and dry-lining.

CASE STUDIES



THE ROYAL AIR FORCE CLUB

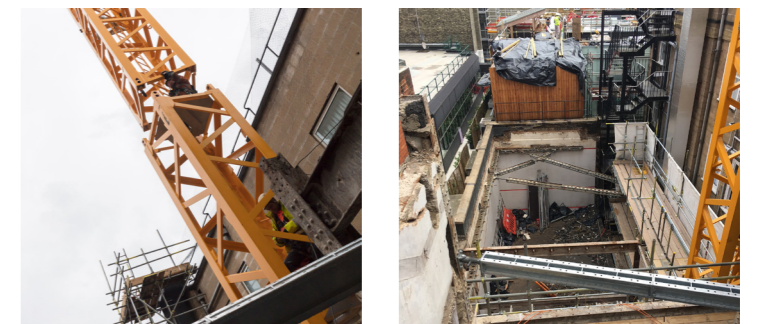
DURATION:

20 weeks

CONTRACT TYPE:

JCT Intermediate with Contractors design

The project at the RAF Club in London involved several logistical challenges due to the location of the site. The RAF Club is completely surrounded by other buildings, which meant we had to develop a strategy that enabled us to install a large tower crane on site and complete demolition and piling operations whilst the Club remained in operation. We also liaised closely with the Westminster Council to manage traffic and pedestrians appropriately.



YOUNG STREET, LONDON

DURATION: 12 weeks

CONTRACT TYPE:
JCT Intermediate with
Contractors design

This project required the complete refurbishment of the main reception area and the creation of multiple meetings rooms on the first floor. This involved a full strip out of existing walls and ceilings before installing the new design, which included a granite finish to the ground floor, a travertine stone reception desk, and extensive bespoke joinery features.





MSA EXTRA

DURATION: 26 weeks

CONTRACT TYPE:
JCT Design & Build

Beaconsfield Services was Alcema's third project for MSA Extra and involved the build of the Unit 11 extension. As the site remained live, we created a new entrance to ensure customer safety while we modified the services below ground, erected a steel frame, and delivered a Pilkington Planar glazed facade complete with roof section and internal works. The extension was leased to Pizza Express on completion.



MSA EXTRA

DURATION: 21 weeks

CONTRACT TYPE: JCT Design & Build

Following the successful completion of the Unit 11 extension, Alcema won the contract for the design and build of a new Starbucks drive-thru, including the associated car park within the boundary of the live service motorway area. The new unit was built on the exit northwest of the service area where all vehicles that visit the facilities pass through. The build also included the landscaping of the surrounding area.



UNIVERSITY OF WESTMINSTER, HARROW CAMPUS

DURATION: 30 weeks

CONTRACT TYPE: JCT Design & Build

This project for the University of Westminster was divided into two phases. The first phase involved the conversion of multiple classrooms into an open plan, high quality fashion studio for a leading London fashion house and the full refurbishment of the WC facilities across two floors. The second phase comprised the conversion of two ground floor lecture rooms into high-tech AV teaching facilities.



OUR EXPERIENCE

The Alcema team have been involved in numerous projects ranging up to £30 million in value. Regardless of size and scope, we are dedicated to deliver every build to exceptional standard.

We work collaboratively with clients, consultants, and approved sub-contractors to offer a diverse mix of services. Although we carry out straightforward refurbishments and new builds to great effect, we consider highly complex projects that require technical insight and innovative solutions to be Alcema's greatest strength.



NORTHAMPTON GENERAL HOSPITAL

DURATION: 70 weeks

PROJECT VALUE: £13 million

ALCEMA COLLEAGUES:

Paul Reeve and Marcus Darcy

This project involved the construction of a new cardiology and nuclear medicine facility for Northampton General Hospital. The works involved the implementation of a complex steel frame in between and on top of live departments using small size pile rigs. Multiple meetings between all parties involved ensured a superb finished build for the hospital with minimal disruptions to its day-to-day activities.



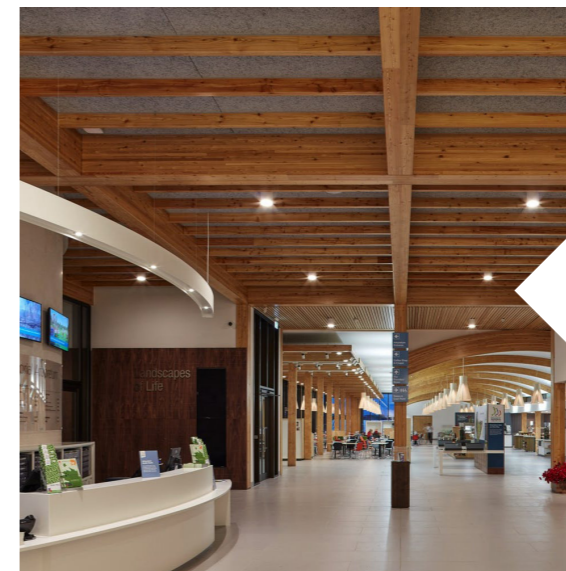
ST MICHAEL'S CATHOLIC SCHOOL

DURATION: 104 weeks

PROJECT VALUE: £24 million

ALCEMA COLLEAGUE: Chyrryl Culley

This project encompassed the phased development of a 'satellite' secondary school of St Michael's in Aylesbury. A temporary school, accommodating 120 Year 7 pupils, was built while the construction of the permanent school was in progress. The final result was delivered in 2020; the works spanned exactly two years, with a total project value of £30m.



THE NATIONAL MEMORIAL ARBORETUM

DURATION: 54 weeks

PROJECT VALUE: £10.8 million

ALCEMA COLLEAGUE: Marcus Darcy

The Arboretum in Alrewas is a British site of national remembrance. The visitor centre was expanded to accommodate a higher volume of visitors – up to 500,000 more. The project involved the demolition of the existing building and the construction of a new hybrid steel and glued laminated (glulam) beams structure. Throughout the works, the site remained live with no disruptions to the daily service.



HOTEL INDIGO

DURATION: Ongoing, phased over 2 years

PROJECT VALUE: £13.5 million

ALCEMA COLLEAGUE: Paul Reeve

The project involved refurbishing all the existing rooms of this 16th century, Grade II listed property. This included stripping back the historic Tudor building to its timber frames in order to protect and preserve it for posterity. The logistics of the project were extremely challenging on all sides and were coupled with the application of heritage restoration requirements.



MARKS AND SPENCER

DURATION: 14 weeks

CONTRACT TYPE: JCT Minor Works with Design

The team have successfully completed several projects for Marks and Spencer and they were assigned the complete refurbishment of The Pantheon, one of Marks and Spencer's flagship stores located on Oxford Street, London. Dating back to the 1930's, the building presented several legacy issues, including asbestos-containing materials. Through exemplary communication with the store team, we were able to phase the required works whilst causing minimal disruption to staff and customers.



HEALTH & SAFETY

At Alcema we are aware of our responsibilities and comply with all relevant legislation and guidelines, working to deliver best practices. We regularly invest in training for all our team members, all certifications and training records available on request.

OUR ACCIDENT AND INCIDENT RECORD IS EXEMPLARY



“We’re doing our bit for the environment”

At Alcema, we want to do our bit for the environment. We are therefore committed to minimising the environmental impact of our operations and actively work towards creating a sustainable business with an outstanding ecological performance.

We strive to procure materials that are responsibly sourced and recyclable in order to reduce our overall waste output. Additionally, we aim to minimise our use of resources through energy efficiency, segregation of waste and recyclables, paperless offices, and video conferencing.

Our staff are trained in environmental best practice and take this into consideration when discussing projects with our clients.



CLIENT TESTIMONIALS

PIPPA BRAND-BENNEE • HEAD TEACHER THOMAS HICKMAN SCHOOL

We have been working alongside Alcema Ltd since October on a new build nursery project. As with all large projects in schools, although exciting, this was also quite a daunting prospect for us. As well as having to stick to the usual safety measures, they also had to contend with Covid-19 restrictions however, the project has run professionally, efficiently and effectively and is even scheduled to be completed early.

The work carried out has had minimal disruption to daily school life and all subcontractors have been polite, courteous and helpful. The site is kept clean and tidy despite heavy works going on. A knowledgeable and polite site manager, Marcus, has kept the school project manager up to date every week with a schedule of works. We have no hesitation whatsoever in recommending them.

JAMES BASNETT BUILDING MANAGER • WAY OF LIFE

I can safely say that it has been a pleasure to deal with Alcema. The professionalism from the offset has been second to none and the project has been managed superbly.

A real key component in my eyes when carrying out projects such as the one at Vida House is communication. This was a big strength of Alcema as I was constantly kept in the loop with all aspects on a daily, weekly, and fortnightly basis.

Throughout the project I felt that all safety measures and cleaning practices were dealt with appropriately which was obviously magnified as the project took place in the middle of the covid-19 pandemic.

DR PATRICK KERR PRACTICE MANAGER WALL HOUSE SURGERY

I am very grateful for all your help, support and belief in completing the surgery rebuild. Stephen kept on producing solutions to problems and minimised an expensive drift.

The heatwave has made the patients and staff very appreciative of the reflective glass, insulation and cooling system. Alcema behaved in an efficient, professional way and delivered a well rebuilt surgery.

DAVID MILLER HEAD TEACHER PEBBLE BROOK SCHOOL

Pebble Brook School now have a beautiful new teaching block crafted out of a decrepit old building by a highly skilled building company. Alcema have delivered on all their promises and constructed a part of our school that will benefit many pupils over many years to come.

Alcema are a progressive construction company and demonstrate a clear commitment to community welfare and positive links and support. Connections with pupils and staff, including assemblies and learning projects, are a feature of their approach.

HANKA STANDFORD BUCKINGHAMSHIRE COUNCIL

The communication throughout the project has been excellent and Marcus maintained an excellent working relationship with the school which really helped make the process easier for them. This is highly valued and appreciated by all.

Alcema worked well as a team to provide solutions to unforeseen technical issues and Paul presented useful ideas to create cost savings for the client. The sub contractors being very well managed and the built product is very well finished and presented to a high standard.

Buckinghamshire Council are very happy with the high quality of workmanship and it was a positive working relationship. The project was completed on time and within budget.

MILES D POOLEY MI FIH • CHIEF EXECUTIVE & CLUB SECRETARY • ROYAL AIR FORCE CLUB

Alcema successfully completed the first phase of the project to add 17 additional bedrooms at the Royal Air Force Club, Central Piccadilly. Their works included demolition of a multi storey existing building and squash courts, basement piling and the erection of a 30m tower crane, all while the club was in full operation. The project had many logistical challenges which they were able to deal with. The first phase of the scheme went well and was completed to the agreed dates.

A FEW OF OUR CLIENTS



UNIVERSITY OF WESTMINSTER

EXTRA

ALCEMA

INSPIRE ▶ COLLABORATE ▶ INNOVATE

WWW.ALCEMA.CO.UK

CONTACT US TODAY

VISIT OUR OFFICE

The Courtyard Meadowbank,
Furlong Road, Bourne End

CHAT WITH US

T: +44 (0)20 3195 6778
E: Admin@alcema.co.uk

